

How do I work out my timetable?

Timetables can be accessed online:

<http://student.admin.utas.edu.au/coursesenrolment/timetable/LectureTimetable.asp>

Make sure to first **refine your search** by selecting the relevant:

- Semester Event
- Campus Year

You can display your individual timetable or that of a specific unit by entering either:

- **student id number** (this will display all units you are currently enrolled in).
- **unit code** that you are interested in e.g. KGA171

Tips for Planning a Successful Timetable:

Attend the first lecture for each unit. This is when you receive important timetable information such as how to nominate a tutorial time and when tutorials begin.

Lecture times are usually set, but there will be a number of tutorial times to choose from. (Remember, the online timetable will display every possible tutorial time, you will generally need to choose and attend only one of these times each week as they are repeat classes). Consult the unit outline or <http://courses.utas.edu.au> to determine which classes you need to attend.

Reading the timetable:

Unit Code e.g. KPA161 – the unit code for Biology of Plants. To access further unit details click on any unit code as displayed on your timetable.

Class types – indicated on the top right hand corner as Lecture, Tutorial, Seminar, Practical, Workshop, Field Trip or Videoconference.

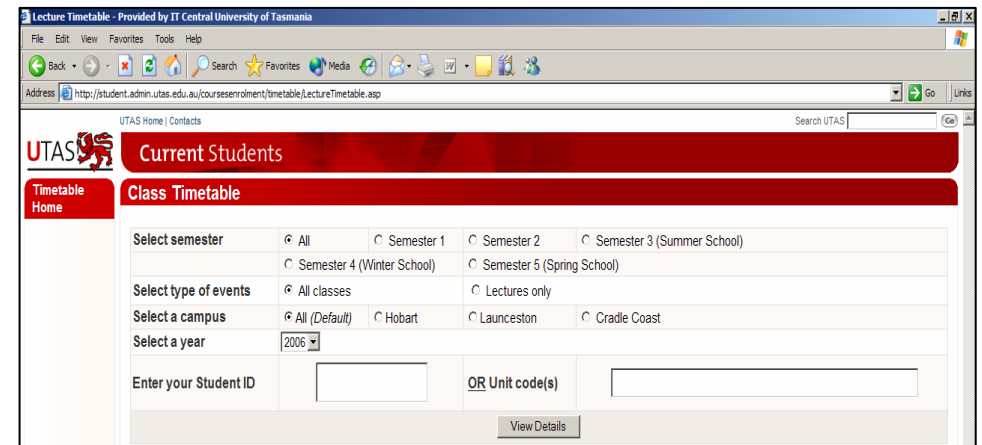
Venue e.g. **NH.X.138.LT5** – tells you the campus (NH - Newnham), Building (X), room number (138) / lecture theatre (LT5) for the class. If you click on the **venue code** it will take you to a more descriptive dialogue box.

Weeks e.g. SEM1: 1-13 – this indicates that the timetable is relevant to semester 1 only.

Official Name – includes campus, room number and name code e.g. NH (Newnham campus), SB (Sandy Bay campus), CC (Cradle Coast Campus), etc.

Directions to Venue – eg. the first number usually indicates what floor the room is on e.g. 172 would be level 1.

Campus Maps – www.utas.edu.au/campus/campus_maps.html



The screenshot shows a detailed class timetable for Unit(s) HGA101 in Semester 1, 2006, as of 6/07/2006. The timetable is a grid with columns for days of the week (Mon, Tue, Wed, Thu, Fri, Sat, Sun) and rows for times (9:00am, 10:00am, 11:00am). Each cell contains a class entry with a red icon, the unit code HGA101, and the class type. The entries are:

Time	Mon	Tue	Wed	Thu	Fri	Sat	Sun
9:00am		HGA101 Video Conference Lecture					
10:00am		HGA101 Tutorial				HGA101 Tutorial HGA101 Lecture Sociology A Venue: Building L (FAB)-L151 (LT 9) Weeks: SEM1: 12	
11:00am		HGA101 Tutorial Sociology A Venue: BA27 Building D - D-122/123 Weeks: SEM1: 1- 13	HGA101 Tutorial Sociology A Venue: BA27 Building D - D129 Weeks: SEM1: 1- 13			HGA101 Tutorial HGA101 Lecture Sociology A Venue: Building L (FAB)-L151 (LT 9) Weeks: SEM1: 12	